

Hammer Mill Noise Control

©2003-2008 Unger Technologies, Inc. All Rights Reserved.

Hammer Mills work on the principle that most materials will crush or pulverize upon impact using a three step operation. This operation can be very noisy and loud.

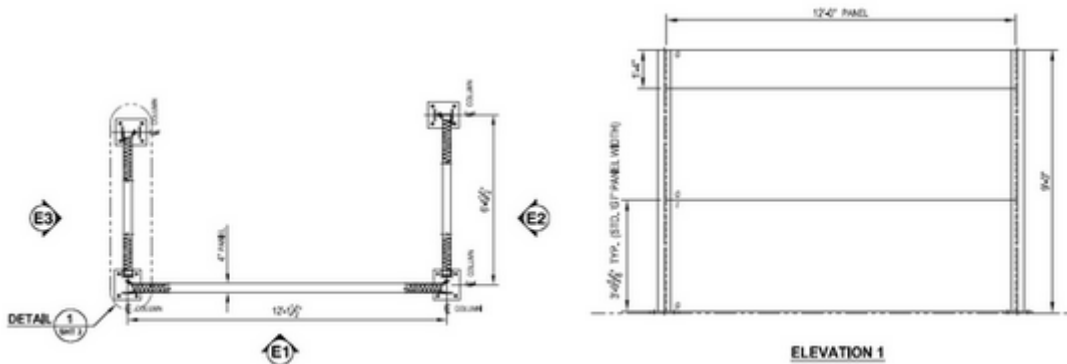
1. Material is fed into the mill's chamber typically by gravity.
2. The material is struck by ganged hammers (rectangular pieces of hardened steel) which are attached to a shaft which rotates at high speed inside the chamber. The material is crushed or shattered by the repeated noisy hammer impacts, collisions with the walls (which can create outdoor environmental noise at the property line) of the grinding chamber, as well as particle on particle impacts.
3. Perforated metal screens, or bar grates covering the discharge opening of the mill retains coarse materials for further grinding while allowing the properly sized materials to pass as finished product.



We suggest using acoustic steel sound panels to help abate the noise from a Hammer Mill. Either a sound wall or a full sound enclosure can be engineered around the high decibel Hammer Mill. This acoustic noise control approach can help lower the noise levels at the property line caused by this noisy grinder machine.



Sound Wall used to control outdoor noise



Example of outside Sound Wall

Elevation of Sound Barrier

Unger Technologies, Inc.
297 North 9th Street
Noblesville, IN 46060
Tel: (317) 774-1900
Fax: (317) 774-1911